

Marc Mills	US EPA, Office of Research and Development, National Risk Management Research Laboratory, Cincinnati, Ohio, USA
Shoji Nakayama	NIES, National Institute for Environmental Studies, Tsukuba, Japan
Go Suzuki	NIES
Valeria Dulio	INERIS, Institut National de l'Environnement Industriel et des Risques, France
Selim Ait-Aissa	INERIS
Pim Leonards	IVM, Institute for Environmental Studies, VU, Amsterdam, NL
Marja Lamoree	IVM

NORMAN workshop

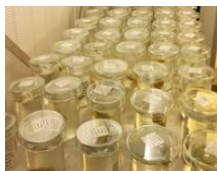
Integrated Exposure and Effects Assessment

11-12 April 2017
Amsterdam, The Netherlands

Organised by
NORMAN network
Working group 3
and
IVM – Institute for Environmental Studies
Vrije Universiteit Amsterdam
The Netherlands

Announcement and Call for Papers
Deadline for abstract submission
15 February 2017

Deadline for early registration
15 March 2017

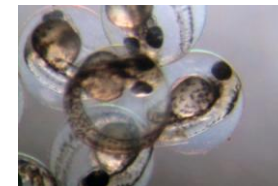


REGISTER & PAY HERE:

http://www.formdesk.com/vu-onlinepayment/FALW_Registration_NORMAN_Workshop

Contact

Marja Lamoree
Institute for Environmental Studies
Vrije Universiteit Amsterdam
The Netherlands
tel: +31 20 5989 573
email: marja.lamoree@vu.nl



NORMAN

The NORMAN network enhances the exchange of information on emerging environmental substances, and encourages the validation and harmonisation of common measurement methods and monitoring tools so that the requirements of risk assessors and risk managers can be better met. It specifically seeks both to promote and to benefit from the synergies between research teams from different countries in the field of emerging substances. NORMAN is an independent and competent platform in the field of emerging pollutants. NORMAN facilitates an exchange of information, debate and research collaboration at the global level, with official recognition from institutional agencies of the EU.

Background & Objectives

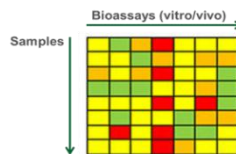
A two-day workshop on Integrated Exposure and Effects Assessment will be organised by IVM in collaboration with the US Environmental Protection Agency and the National Institute for Environmental Studies of Japan, under the umbrella of the NORMAN network, with additional sponsoring from the Dutch Technology Foundation STW.

The aim is to bring together the experience gained in the USA, Asia and Europe regarding the deployment of target- / non-target screening and biological monitoring tools for integrated exposure and effect assessment. This workshop should also offer the opportunity for the definition of recommendations for WFD Review in 2019.

The presence of emerging contaminants in the environment and their potential adverse effects are of continuous concern. This workshop will bring together complementary lines of research to study the occurrence and behaviour of pollutants in our environment. It is vital to integrate both analytical chemical and toxicological approaches especially with regard to identification, not only for parent compounds but also for their metabolites and transformation products. This NORMAN workshop will address research scientists as well as policy makers and aims at providing an overview of the critical issues related to the integrated assessment of exposure and effects of emerging pollutants.

Preliminary topics and scientific programme

- (*in vitro*) effect-based monitoring, toxicity profiling
- Omics techniques for monitoring of effect assessment
- Effect-Directed Analysis
- Status/progress of endocrine disruption in the field (other than estrogenicity)
- Regulatory framework in relation to the implementation of bioassays (EU-WFD, EU-MSFD, Japanese and US regulations)



Invited speakers

François Brion (INERIS, France):

Integrated approaches to investigate the effect of progestins in fish and their occurrence in the aquatic environment

Marc Mills (US Environmental Protection Agency, Cincinnati, Ohio, USA):

Using Weight of Evidence to conduct an integrated exposure and effects assessment of contaminant sources

Go Suzuki National Institute for Environmental Studies, Japan):

Chemical safety assessment using an integrated exposure and effect analysis

European Commission, DG ENV, Brussels, Belgium (to be confirmed)

Expert in European environmental policies with a presentation focusing on the view of Europe / DG ENV about the integration of effect-based monitoring aspects in water policy (EU WFD)

Date Venue

The workshop will take place on 11-12 April 2017
Auditorium of the O|2 Building
Vrije Universiteit
De Boelelaan 1108
1081 HZ Amsterdam
The Netherlands

The venue can be easily reached by train (Amsterdam Zuid) and plane (Amsterdam Schiphol Airport).

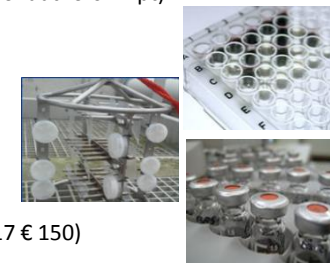


Call for abstracts

This workshop is open for oral and poster contributions. We welcome abstracts of presentations with an indication of preference for oral or poster. All abstracts should be submitted before **15 February 2017** by sending the abstract to marja.lamoree@vu.nl.

Guidelines for abstracts:

- 1 page of A4 (210 x 197 mm, portrait)
- Single spaced
- Preferred font: times roman, 11 pt (title in bold 14 pt, names of authors 12 pt)
- At least 3 cm margins on all sides
- Name(s) of the author(s), full address in the header
- Capitalize title
- Underline the name of the presenting author



Registration & accommodation

Workshop 11-12 April 2017:

- Students and NORMAN partners € 125 (after 15 March 2017 € 150)
- All other participants € 200 (after 15 March 2017 € 250)

This fee will cover attendance to the Workshop, coffee breaks and lunches during the two days.

Workshop dinner on Tuesday 11 April 2017:

- All participants: € 60

Deadline for early registration is 15 March 2017

REGISTER & PAY:

http://www.formdesk.com/vu-onlinepayment/FALW_Registration_NORMAN_Workshop

FIND HOTEL ACCOMMODATION:

<https://www.preferredreservations.nl/norman>

April is a busy time in Amsterdam. Make sure to reserve your hotel as soon as possible, even if your travel is not yet confirmed, as reservations up until 9 rooms can be cancelled free of charge until 48 hours prior to arrival at most hotels.