

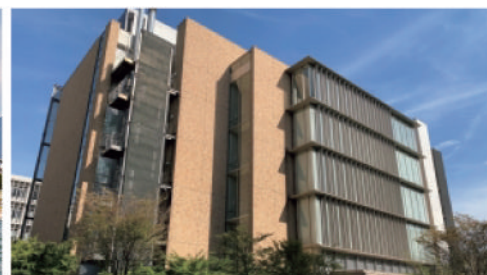
Tsukuba Headquarters



Fukushima Regional Collaborative
Research Center (FRECC)



Lake Biwa Branch Office



Wako Branch Office



National Institute for Environmental Studies

PRESIDENT'S GREETING



Masahide KIMOTO, Ph.D.
President

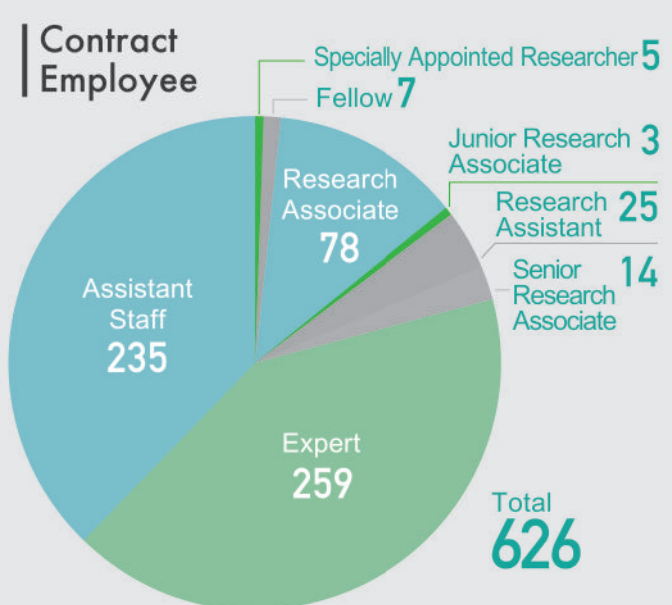
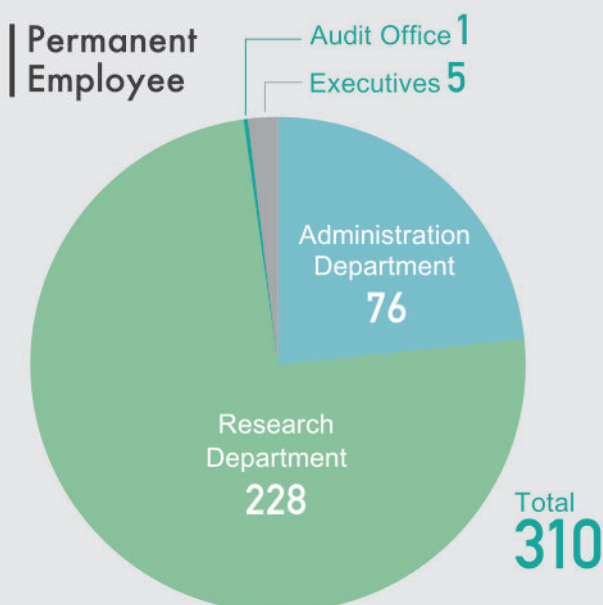
The National Institute for Environmental Studies (NIES) began its history in 1974, playing a central role in Japan in addressing environmental issues which covers a wide range or research fields in an integrated way domestically and globally.

We make the most of our connections and collaborations with other domestic and overseas research organizations, local governments, and other stakeholders. We hope to benefit from your continued support and understanding.

HISTORY OF THE INSTITUTE

- 1974 National Institute for Environmental Studies established
- 1990 Center for Global Environmental Research launched
- 2016 Fukushima Branch established(renamed to FRECC)
- 2017 Lake Biwa Branch Office established
- 2018 Center for Climate Change Adaptation launched
- 2025 Wako Branch Office established

NIES PERSONNEL



Data is as of April 1, 2025

8 RESEARCH DOMAINS

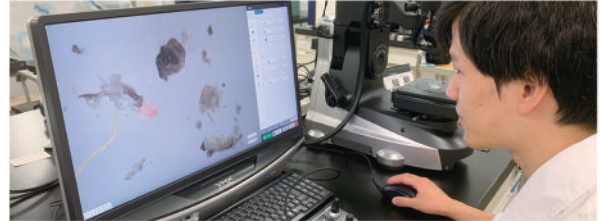
Earth System Domain

*climate change, mitigation,
monitoring, modeling*



Material Cycles Domain

*material flow, resource efficiency,
waste disposal and recycling*



Health and Environmental Risk Domain

*environmental toxicology,
human health, environmental
risk assessment*



Regional Environment Conservation Domain

*air, water and soil environment,
air and lake monitoring,
conservation technologies*



Biodiversity Domain

*extinction risk, invasive alien,
cryopreservation of genetic
resources*



Social Systems Domain

*sustainable society,
decarbonization, future scenario
& vision*



Environmental Emergency and Resilience Research Domain

*radioactively contaminated
waste, recovery and renovation,
disasters waste*

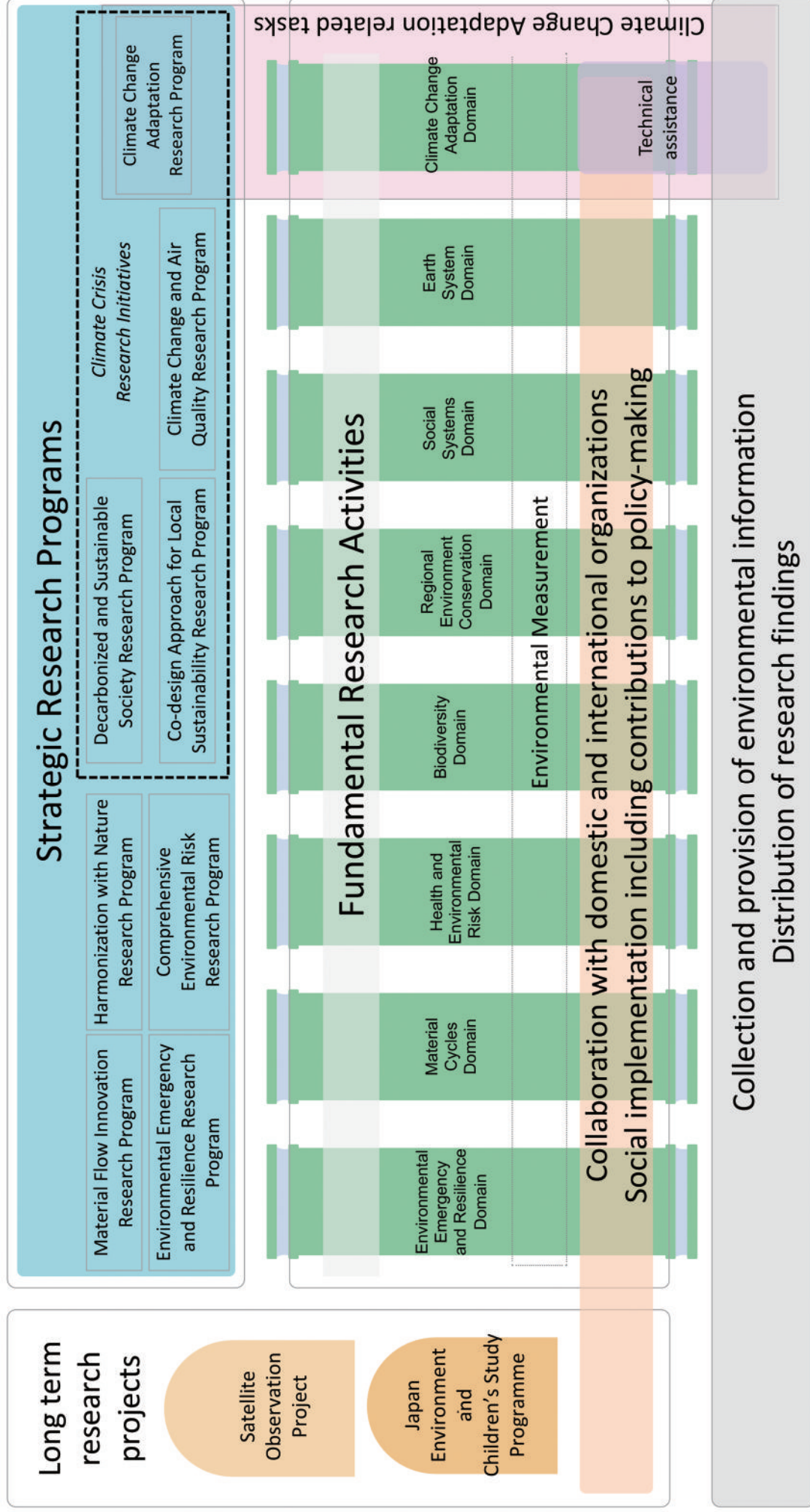


Climate Change Adaptation Domain

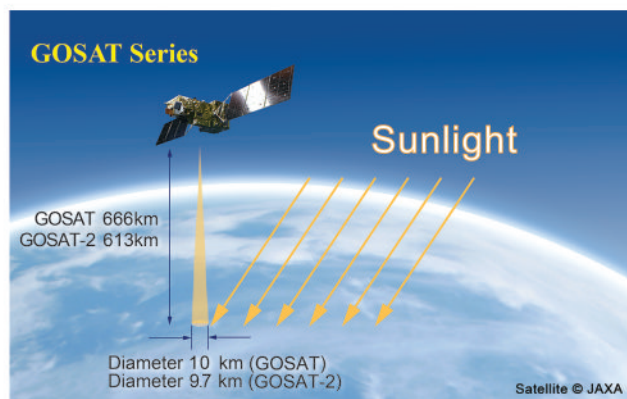
*adaptation strategies,
observation and assessment,
information platform*



5th 5-YEAR MEDIUM-AND-LONG-TERM PLAN



LONG-TERM RESEARCH PROJECTS



Satellite Observation Project

GOSAT (Greenhouse gases
Observing SATellite), carbon cycle,
validation



Japan Environment and Children's Study Programme

a large-scale birth cohort study,
100,000 mother-child pairs,
impact of environmental factors



in Japanese

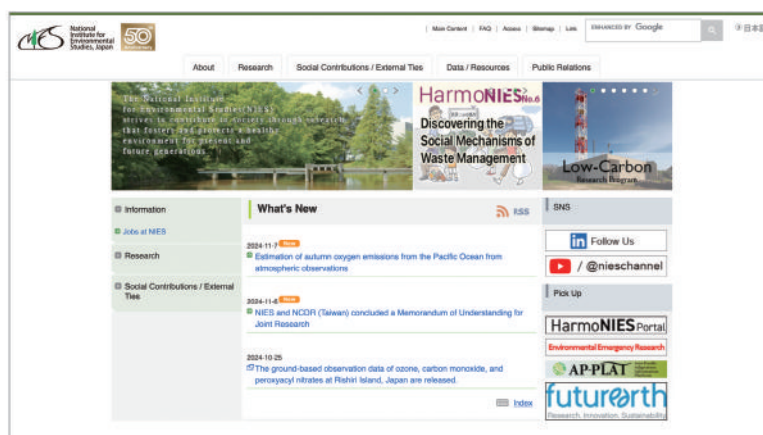
Visit NIES' website

for more information.



We provide information on our current research activities and outcomes. Along with introduction of research divisions, a database of research results is also available on the website.

It is also possible to download a wide range of publications from the website, including NIES Annual Report and research introduction pamphlets, HarmonIES.



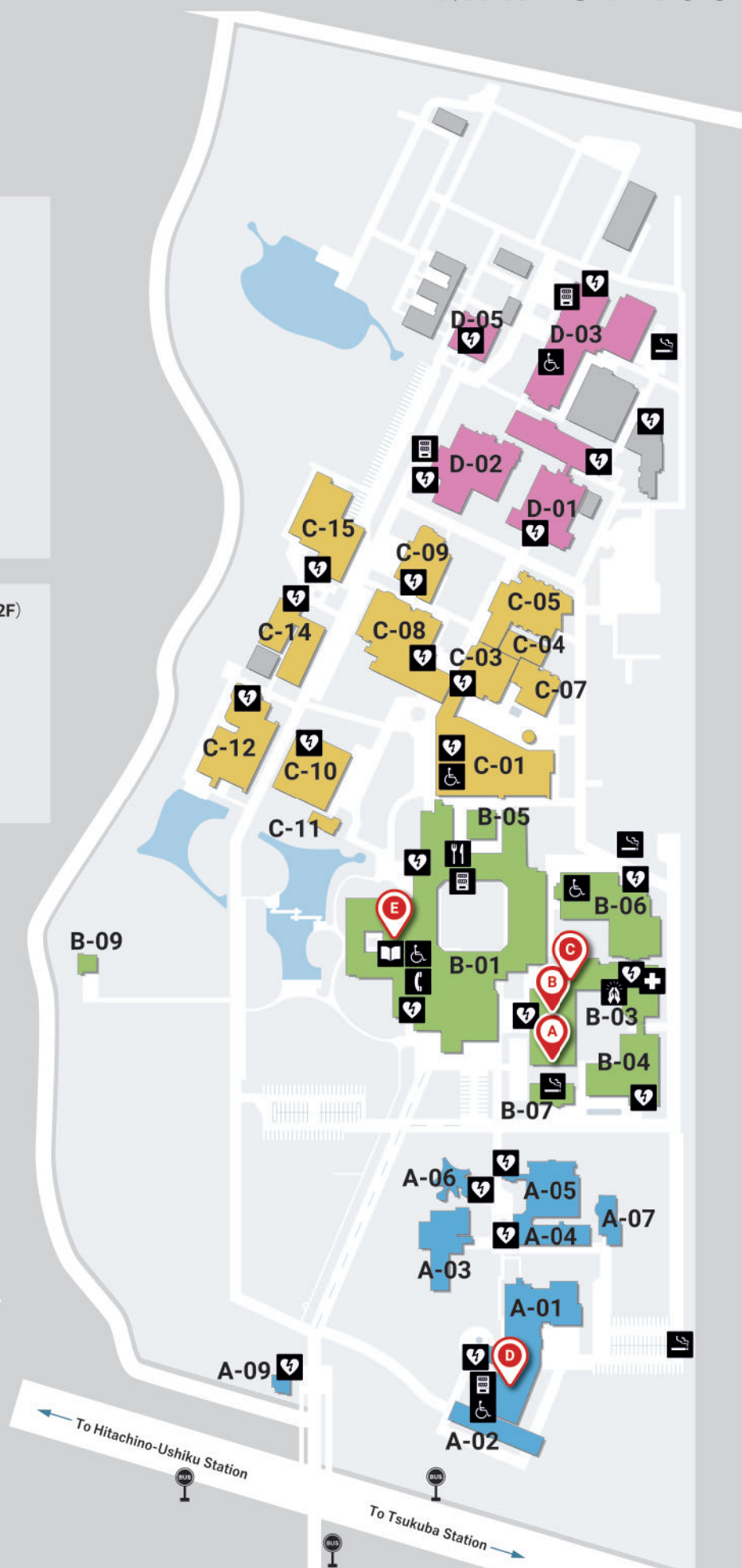
Find your future
at NIES.
-Job vacancy calls-



MAP OF TSUKUBA

-  Barrier-free toilet
-  AED
-  Cafeteria
-  Vending Machine
-  Smoking Area
-  Library
-  Public phone
-  Prayer Room (3F)
-  Sick Bay

-  Ohyama Memorial Hall (2F)
-  Chu Kaigishitsu (3F)
-  Meeting Room 1
-  Koryu Meeting Room
-  Meeting Space



HEADQUARTERS

ZONE C

C-15	Hydrological Laboratory
C-14	Biological Resource Collection
C-12	Aquatron
C-11	Laboratory for Wildlife Disease Diagnosis
C-10	Environmental Specimen Time Capsule Building
C-09	Soil Environment Laboratory
C-08	Biotron
C-07	Nanoparticle Health Effect Laboratory
C-05	Animal Laboratory II
C-04	Animal Laboratory I Annex
C-03	Animal Laboratory I
C-01	Facilities Building

ZONE A

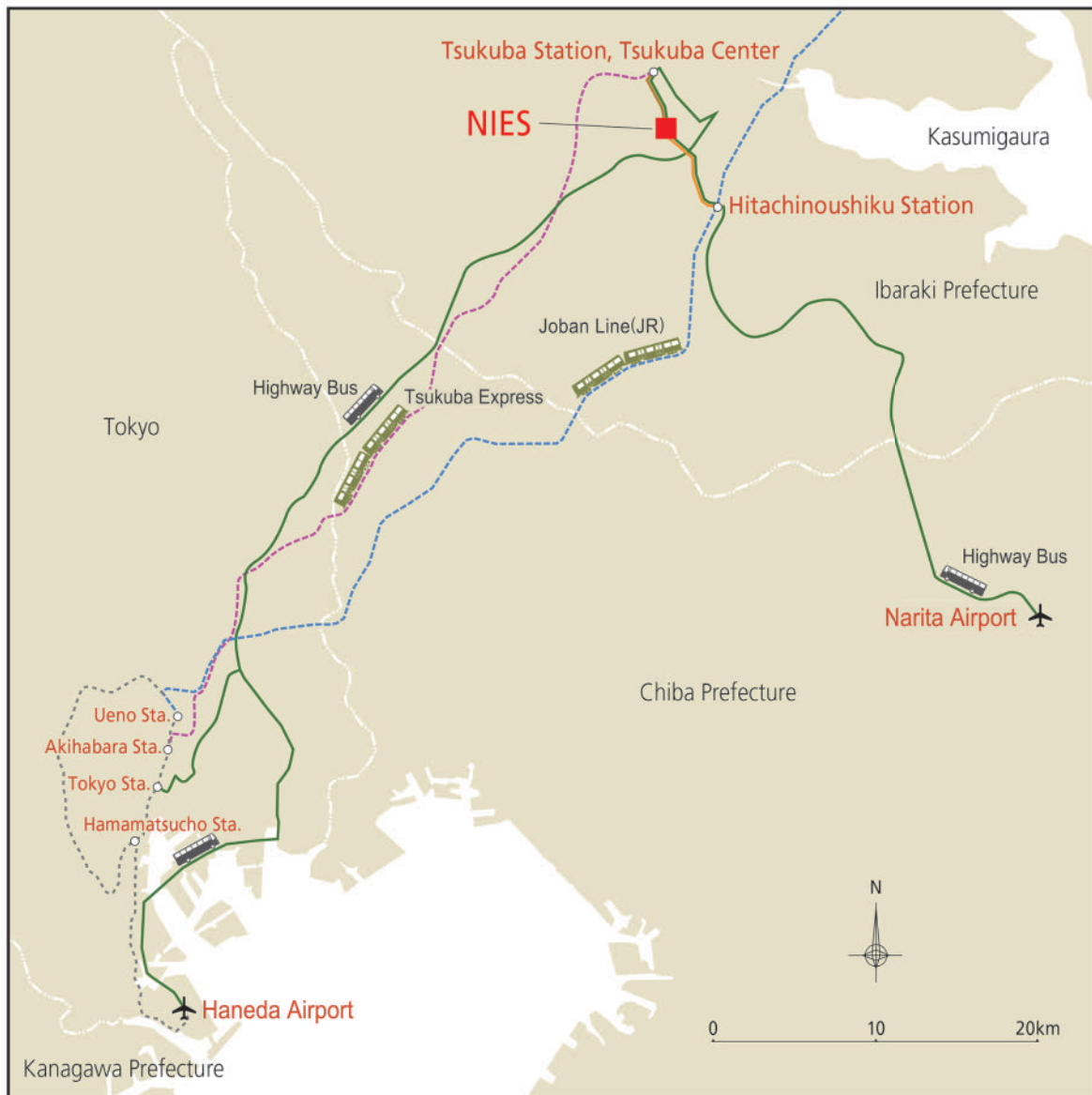
A-09	Guard Station
A-07	JECS Biological Sample Repository
A-06	Atmospheric Pollutant Laboratory
A-05	Atmospheric Chemistry Laboratory
A-04	Multipurpose Atmospheric Laboratory
A-03	GOSAT-2 Computing Facility Building GOSAT-2 Office Building
A-02	Climate Change Research Hall Annex
A-01	Climate Change Research Hall

ZONE D

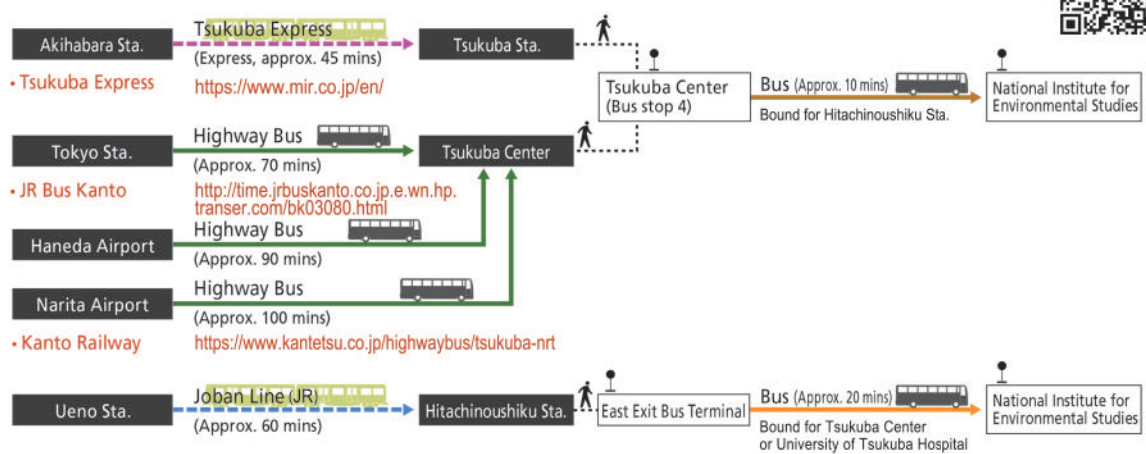
D-05	Ecosystem Research Field Facility Office
D-03	Environmental Risk Research Laboratory
D-02	Ecotron/Environmental Health Research Laboratory
D-01	Radioisotope & Biotechnology Laboratory

ZONE B

B-09	Air Quality Research Station
B-07	Garage
B-06	Research Laboratory of Material Cycles and Waste Management
B-05	Workshop Rooms
B-04	Main Research Building III
B-03	Main Research Building II
B-01	Main Research Building I



Access Routes



NIES, Japan

Address 16-2 Onogawa, City of Tsukuba, Ibaraki 305-8506, Japan

GREEN PRINTING JAPAN
P-D10008
This printing product is manufactured from
environmentally friendly materials by the
Green Printing and Recycle Society

MIX Paper
FSC® C005531