

International Workshop on Inventory, Modeling and Climate Impacts of Greenhouse Gas emissions (GHG's) and Aerosols in the Asian Region

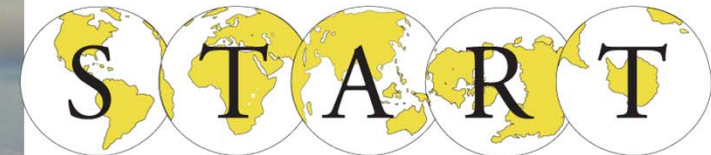


*National
Institute for
Environmental
Studies*



GOFC-GOLD

GLOBAL OBSERVATION FOR FOREST
AND LAND COVER DYNAMICS



global change SysTem for Analysis, Research & Training

Hosting:

NIES (National Institute for Environmental Studies), Japan
GOFC/START, USA

Supporting:

ACAP (Asia Center for Air Pollution Research), Japan

Convener:

Toshimasa Ohara (NIES)
tohara@nies.go.jp

Krishna Prasad Vadrevu (UMCP)
Krishna@hermes.geog.umd.edu

June 26-28, 2013

Tsukuba International Conference Center (EPOCHAL Tsukuba),
Conference room 406

2-20-3, Takezono, Tsukuba, Ibaraki, 305-0032, Japan
<http://www.epochal.or.jp/eng/index.html>

Short history of emission workshop

1st: **Small** workshop

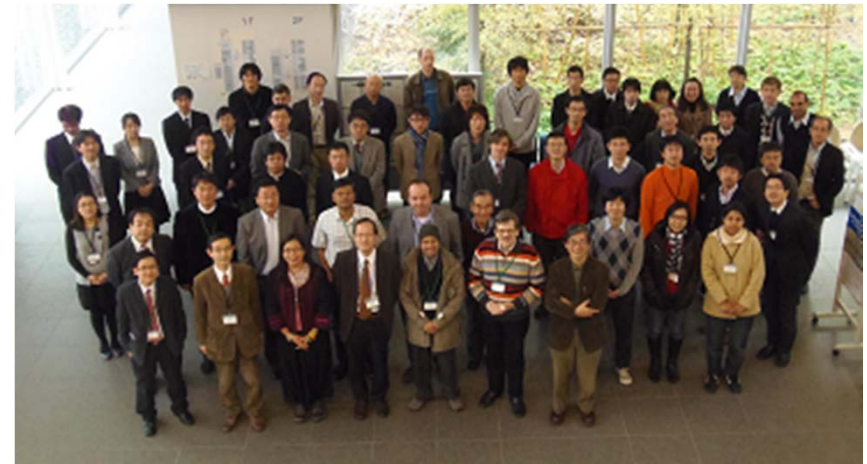
March 1, 2010; NIES(Tsukuba); 6 speakers

2nd: **Suspended** workshop

March 11-12, 2011; EPOCHAL(Tsukuba)

18 speakers,

but actually 1.2 speakers ??



3rd: **Full** workshop

Feb. 24-25, 2012

Yokohama, 18 speakers 2

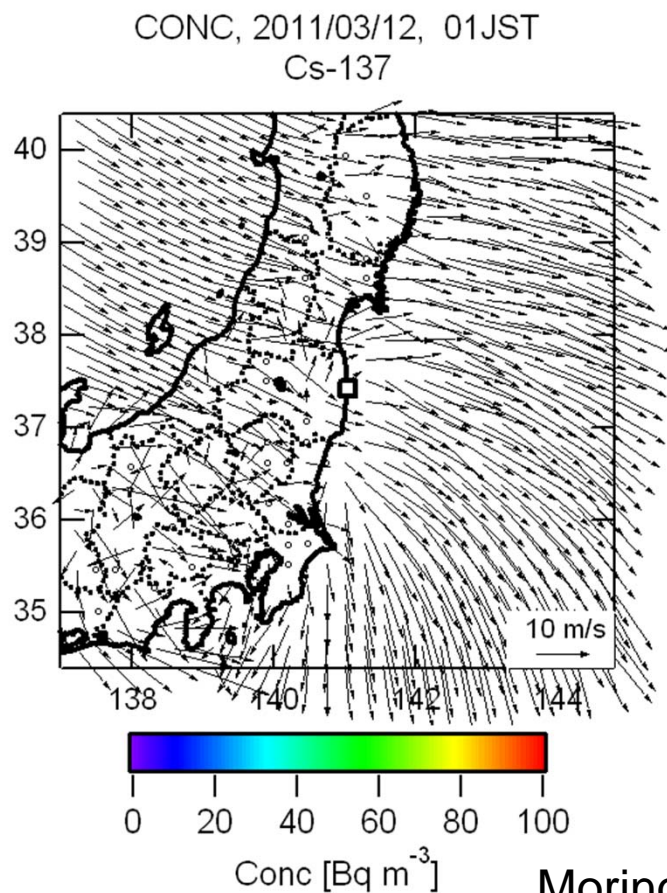
Importance of disaster environmental research (Fukushima case)

Earthquake & Tsunami
(Natural disaster)

FDNPP accidents
(Anthropogenic disaster)

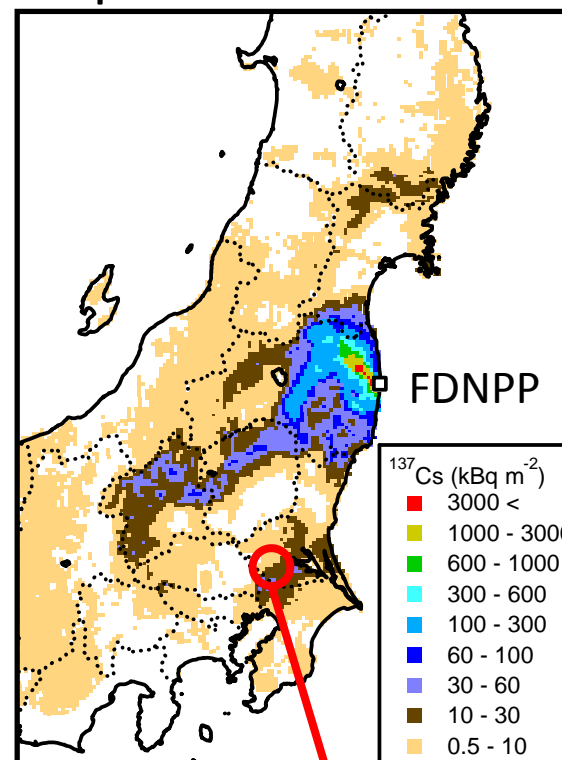
Environmental
contamination

Natural, social &
health impacts



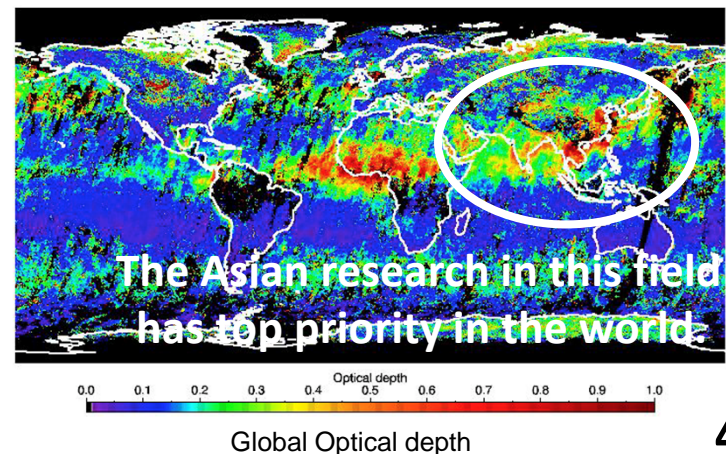
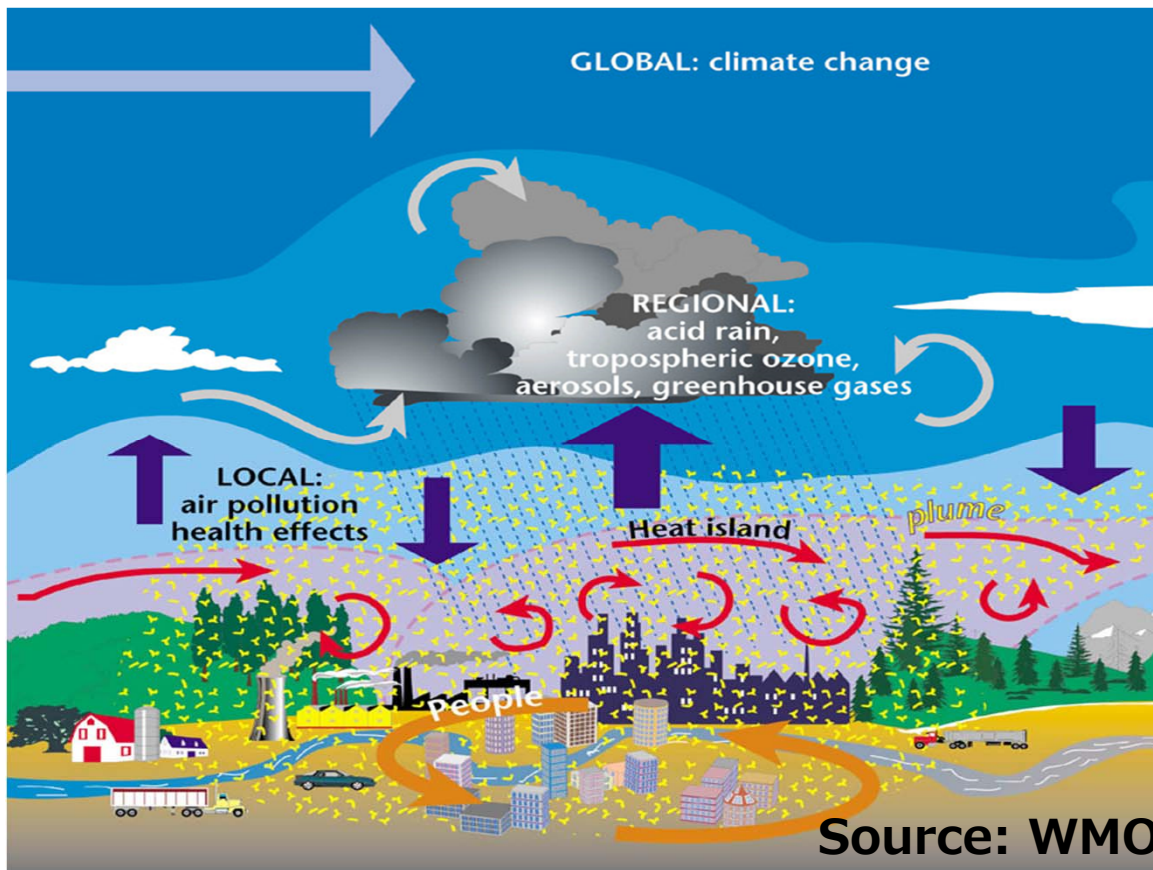
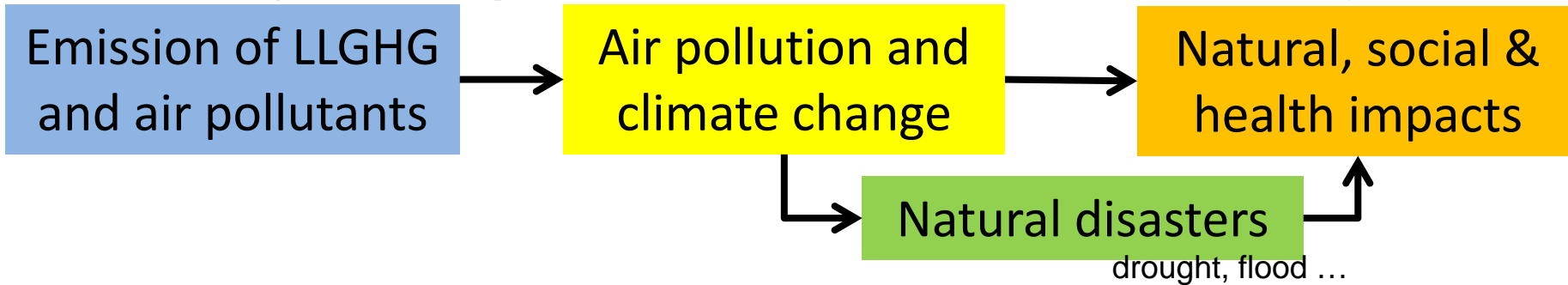
Morino et al. (2011)

Deposition of Cs-137



Tsukuba

Importance of disaster environmental research (Atmospheric environmental case)



Background of this workshop

- ✓ Greenhouse gas (GHG) emissions and short lived climate pollutants (SLCP) from the Asian region have been increasing continuously due to rapid population growth and industrial activities.
- ✓ Quantification of GHG's and SLCP from different sources in Asia and understanding their climate impacts is an important task requiring integration of both top-down and bottom-up approaches.
- ✓ Strong linkage of GOFC-GOLD-Southeast Asia Regional Research and Information Network (SEARRIN) and other international and domestic activities (such as EANET, ERTDF S-7, SALSA, etc.) is important.

Aim of this workshop

- (i) Review GHG and SLCP emission estimates and methodologies from different sources including biomass burning in the Asian region
- (ii) Understand the impact of GHG's and aerosols on local climate
- (iii) Explore the potential of satellite remote sensing datasets for quantifying biomass burning pollutants, aerosols and pollution episodes
- (iv) Review inverse modeling approaches for characterizing emissions
- (v) Strengthen the SEARRIN activities in the region through identifying new point of contact for the network

Outline of program

June 26 (Wed) 13:00-18:00

Session 1: Regional campaigns/studies in Asia

Session 2: Anthropogenic emission inventories in Asia

18:20- Welcome reception

June 27 (Thu) 9:00-12:50

Session 3: Earth Observation Programs in Land Cover/Land

Use/Air Pollution/GHG emissions and Coordination Activities

June 27 (Thu) 13:45-18:00

Session 4: Biomass burning emissions

June 28 (Fri) 9:00-12:30, 13:30-14:45

Session 5: Aerosols, Climate Change and Air Quality

June 28 (Fri) 14:45-15:25

Session 6: SEARRIN

15:30 Meeting adjourn

Thank you for guest speakers

